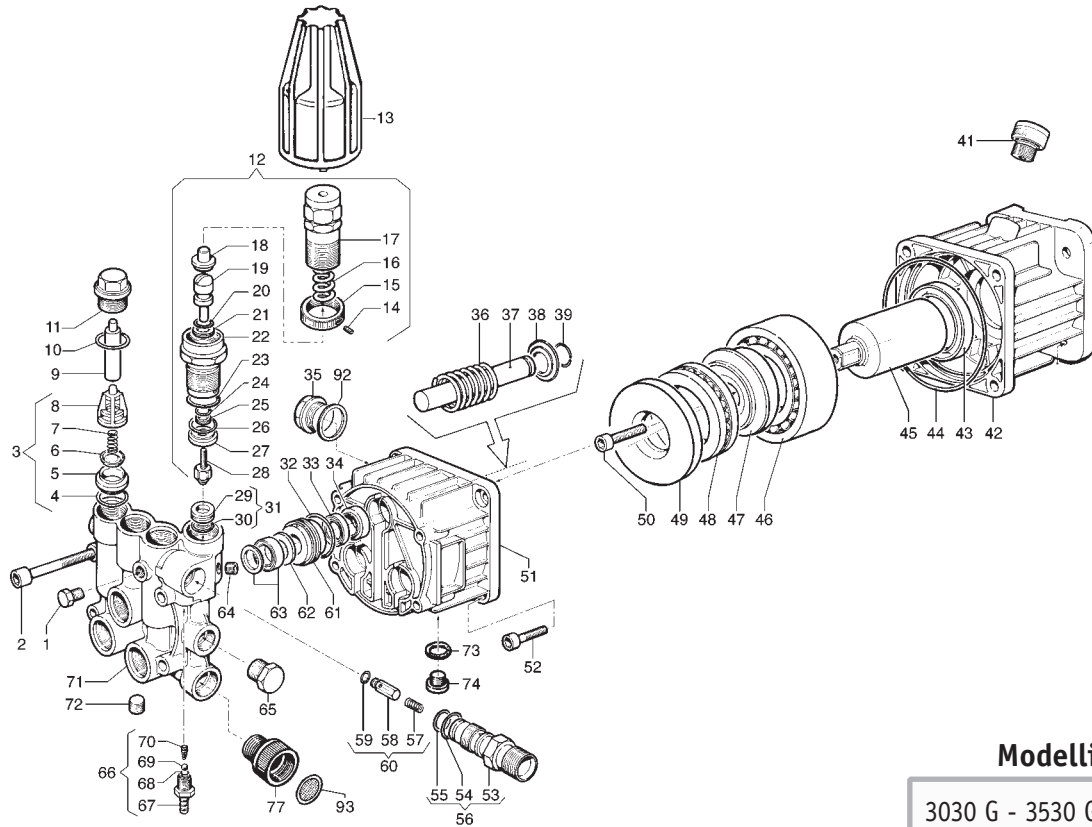


• AXD 200 bar - 3000 p.s.i. •



Modelli / Model

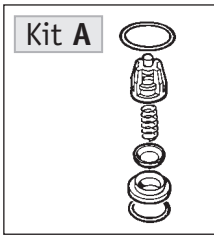
3030 G - 3530 G - 4030 G

| N° | Cod. | Kit | Description | Qty | Note |
|----|-----------|-----|--|-----|------|
| 1 | 3202 0018 | | CAP 1/8" | 1 | |
| 2 | 3609 0014 | | SCREW M8X55 | 4 | |
| 3 | 1220 0045 | | VALVE KIT | 6 | |
| 4 | 1210 0049 | A-D | O-RING 1,78X12,42 | 6 | |
| 5 | 3009 0129 | A | VALVE SEAT | 6 | |
| 6 | 3604 0028 | A | SUC./DEL. VALVE | 6 | |
| 7 | 1802 0192 | A | SPRING | 6 | |
| 8 | 1205 0033 | A | VALVE CAGE | 6 | |
| 9 | 0601 0273 | | SPACER | 2 | |
| 10 | 1210 0151 | A-D | O-RING 1,78X17,17 | 6 | |
| 11 | 3202 0236 | | PLUG | 6 | |
| 12 | 1215 0261 | | REG. VAL KIT FOR 220 bar - 3000 p.s.i. | 1 | |
| 13 | 1817 0054 | | KNOB | 1 | |
| 14 | 3622 0030 | E | STOP ADJUSTABLE NUT M4X4 | 1 | |
| 15 | 1227 0022 | E | NUT | 1 | |
| 16 | 1802 0182 | E | SPRING | 1 | |
| 17 | 0204 0046 | E | ADJUSTABLE KNOB | 1 | |
| 18 | 0009 0207 | E | SEAT | 1 | |
| 19 | 2409 0077 | E-F | PISTON ROD | 1 | |
| 20 | 1210 0406 | E-F | O-RING | 1 | |
| 21 | 0009 0206 | E-F | RING | 1 | |
| 22 | 0204 0045 | E | HOUSING | 1 | |
| 23 | 1210 0407 | E-F | O-RING | 1 | |
| 24 | 1210 0405 | E-F | O-RING | 1 | |
| 25 | 0009 0205 | E-F | RING | 1 | |
| 26 | 1210 0404 | E-F | O-RING | 1 | |
| 27 | 0009 0204 | E-F | RING | 1 | |
| 28 | 3002 0508 | E-F | HOUSING WITH BALL | 1 | |
| 31 | 3009 0013 | E-F | VALVE SEAT | 1 | |
| 32 | 1210 0356 | B-D | O-RING 1,78X25,12 | 3 | |
| 33 | 1241 0050 | B | PISTON SEAL Ø14 | 3 | |
| 34 | 0019 0103 | D | SEALING RING | 3 | |
| 35 | 3201 0019 | | OIL LEVEL PLUG | 1 | |
| 36 | 1802 0153 | | SPRING | 3 | |
| 37 | 2409 0089 | C | PISTON | 3 | |
| 38 | 0009 0269 | C | RING | 3 | |
| 39 | 0009 0220 | C | RING Ø14 | 3 | |
| 41 | 3200 0071 | | PLUG G3/8 | 1 | |
| 42 | 3002 0547 | | SUPPORT | 1 | |

| N° | Cod. | Kit | Description | Qty | Note |
|----|-----------|-------|---------------------------|-----|--------|
| 43 | 0019 0034 | D | SEALING RING 40X55X7 | 1 | |
| 44 | 1210 0429 | D | O-RING | 1 | |
| 45 | 0001 0446 | | HOLLOW SHAFT 1" | 1 | |
| 46 | 0438 0080 | | BALL BEARING 40X90X23 mm | 1 | |
| 47 | 0001 0404 | | ECCENTRIC SHAFT 11°45' | 1 | 4030 G |
| | 0001 0456 | | ECCENTRIC SHAFT 10°30' | 1 | 3530 G |
| | 0001 0453 | | ECCENTRIC SHAFT 9° | 1 | 3030 G |
| 48 | 0436 0019 | | AXIAL BEARING | 1 | |
| 49 | 2816 0026 | | THRUST BEARING | 1 | |
| 50 | 3609 0005 | | SCREW M8X20 | 1 | |
| 51 | 0403 0139 | | PUMP CRANKCASE | 1 | |
| 52 | 3609 0005 | | SCREW M8X20 | 4 | |
| 53 | 3410 0316 | E | INJECTOR BODY 3/8 NPT | 1 | |
| 54 | 1210 0040 | E-F | O-RING 1,78X 15,6 | 1 | |
| 55 | 1210 0049 | D-E-F | O-RING 1,78X 12,42 | 1 | |
| 56 | 3410 0318 | | INJECTOR BODY KIT 3/8 NPT | 1 | |
| 57 | 1802 0197 | E | SPRING | 1 | |
| 58 | 2409 0086 | E | CHECK VALVE | 1 | |
| 59 | 1210 0460 | E-F | O-RING | 1 | |
| 60 | 2409 0091 | | CHECK VALVE KIT | 1 | |
| 61 | 0009 0261 | | RING | 3 | |
| 62 | 0009 0262 | B | RING | 3 | |
| 63 | 1241 0056 | B | PISTON SEAL 180 BAR | 3 | |
| 64 | 3200 0017 | | PLUG 1/8X8 | 1 | |
| 65 | 3200 0007 | | PLUG 3/8 GAS ØT58 | 1 | |
| 66 | 2803 0435 | | INJECTOR KIT | 1 | |
| 67 | 2803 0425 | | HOSE BARB FITTING | 1 | |
| 68 | 2812 0067 | | O-RING | 1 | |
| 69 | 3003 0026 | | BALL | 1 | |
| 70 | 1802 0180 | | SPRING | 1 | |
| 71 | 3218 0327 | | PUMP VALVE CHAMBER | 1 | |
| 72 | 3200 0017 | | PLUG 1/8X8 | 1 | |
| 73 | 1209 0012 | | GASKET | 1 | |
| 74 | 3200 0010 | | PLUG 1/4 GAS | 1 | |
| 77 | 2800 0096 | | GARDEN HOSE TAIL | 1 | |
| 92 | 1210 0048 | | O-RING Ø2,62x20,24 | 1 | |
| 93 | 1002 0116 | | FILTER | 1 | |

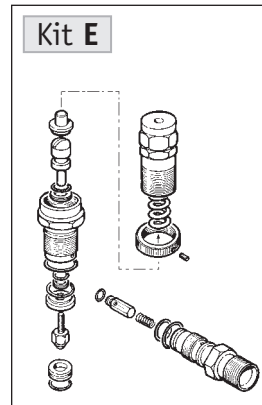
• AXD 200 bar - 3000 p.s.i. •

Kit Valvola Aspirazione/Mandata (5025 0014) Complete Valve Kit



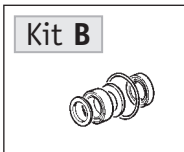
| 5025 0014 | | |
|-----------|-----------|-----|
| N° | Cod. | Qty |
| 4 | 1210 0049 | 6 |
| 5 | 3009 0129 | 6 |
| 6 | 3604 0028 | 6 |
| 7 | 1802 0192 | 6 |
| 8 | 1205 0033 | 6 |
| 10 | 1210 0151 | 6 |

Kit Revisione - 3/8" NPT (5026 0143) Overhaul Kit - 3/8" NPT



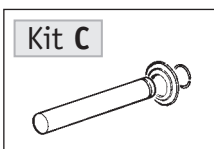
| 5026 0143 | | |
|-----------|-----------|-----|
| N° | Cod. | Qty |
| 14 | 3622 0030 | 1 |
| 15 | 1227 0022 | 1 |
| 16 | 1802 0182 | 1 |
| 17 | 0204 0046 | 1 |
| 18 | 0009 0207 | 1 |
| 19 | 2409 0077 | 1 |
| 20 | 1210 0406 | 1 |
| 21 | 0009 0206 | 1 |
| 22 | 0204 0045 | 1 |
| 23 | 1210 0407 | 1 |
| 24 | 1210 0405 | 1 |
| 25 | 0009 0205 | 1 |
| 26 | 1210 0404 | 1 |
| 27 | 0009 0204 | 1 |
| 28 | 3002 0508 | 1 |
| 31 | 3009 0013 | 1 |
| 53 | 3410 0298 | 1 |
| 54 | 1210 0040 | 1 |
| 55 | 1210 0049 | 1 |
| 57 | 1802 0197 | 1 |
| 58 | 2409 0086 | 1 |
| 59 | 1210 0460 | 1 |

Kit Guarnizioni Pistoni • Piston Seal Kit 200 bar - 3000 p.s.i. (5019 0086)



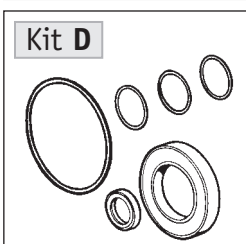
| 5019 0086 | | |
|-----------|-----------|-----|
| N° | Cod. | Qty |
| 32 | 1210 0356 | 3 |
| 33 | 1241 0050 | 3 |
| 62 | 0009 0262 | 3 |
| 63 | 1241 0056 | 3 |

Kit Pistone Ø14 mm • Ø14 mm Piston Kit (2409 0103)



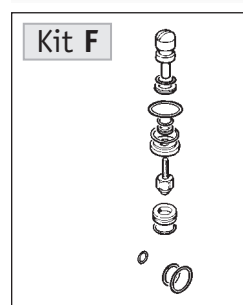
| 2409 0103 | | |
|-----------|-----------|-----|
| N° | Cod. | Qty |
| 37 | 2409 0089 | 3 |
| 38 | 0009 0269 | 3 |
| 39 | 0009 0220 | 3 |

Kit Guarnizioni Pompa • Seal Kit (5019 0079)



| 5019 0079 | | |
|-----------|-----------|-----|
| N° | Cod. | Qty |
| 4 | 1210 0049 | 6 |
| 10 | 1210 0151 | 6 |
| 32 | 1210 0356 | 3 |
| 34 | 0019 0103 | 3 |
| 43 | 0019 0034 | 1 |
| 44 | 1210 0429 | 1 |
| 55 | 1210 0049 | 1 |

Kit manutenzione • Maintenance Kit (5026 0144)



| 5026 0144 | | |
|-----------|-----------|-----|
| N° | Cod. | Qty |
| 19 | 2409 0077 | 1 |
| 20 | 1210 0406 | 1 |
| 21 | 0009 0206 | 1 |
| 23 | 1210 0407 | 1 |
| 24 | 1210 0405 | 1 |
| 25 | 0009 0205 | 1 |
| 26 | 1210 0404 | 1 |
| 27 | 0009 0204 | 1 |
| 28 | 3002 0508 | 1 |
| 31 | 3009 0013 | 1 |
| 54 | 1210 0040 | 1 |
| 55 | 1210 0049 | 1 |
| 59 | 1210 0460 | 1 |